
This is an electronic reprint of the original article.
This reprint may differ from the original in pagination and typographic detail.

Author(s): Ramos, J. A. P. & Granato, E. & Ying, S. C. & Achim, C. V. & Elder, K. R. & Ala-Nissilä, Tapio

Title: Dynamical transitions and sliding friction of the phase-field-crystal model with pinning

Year: 2010

Version: Final published version

Please cite the original version:

Ramos, J. A. P. & Granato, E. & Ying, S. C. & Achim, C. V. & Elder, K. R. & Ala-Nissilä, Tapio. 2010. Dynamical transitions and sliding friction of the phase-field-crystal model with pinning. *Physical Review E*. Volume 81, Issue 1. P. 011121/1-7. ISSN 1539-3755 (printed). DOI: 10.1103/physreve.81.011121.

Rights: © 2010 American Physical Society (APS). <http://www.aps.org>

All material supplied via Aaltodoc is protected by copyright and other intellectual property rights, and duplication or sale of all or part of any of the repository collections is not permitted, except that material may be duplicated by you for your research use or educational purposes in electronic or print form. You must obtain permission for any other use. Electronic or print copies may not be offered, whether for sale or otherwise to anyone who is not an authorised user.

Dynamical transitions and sliding friction of the phase-field-crystal model with pinningJ. A. P. Ramos,^{1,2} E. Granato,^{2,3} S. C. Ying,³ C. V. Achim,^{4,5} K. R. Elder,⁶ and T. Ala-Nissila^{3,4}¹*Departamento de Ciências Exatas, Universidade Estadual do Sudoeste da Bahia, 45000-000 Vitória da Conquista, BA, Brazil*²*Laboratório Associado de Sensores e Materiais, Instituto Nacional de Pesquisas Espaciais, 12245-970 São José dos Campos, SP, Brazil*³*Department of Physics, Brown University, P.O. Box 1843, Providence, Rhode Island 02912-1843, USA*⁴*Department of Applied Physics and COMP Center of Excellence, Helsinki University of Technology,**P.O. Box 1100, FI-02015 TKK, Espoo, Finland*⁵*Institut für Theoretische Physik II: Weiche Materie, Heinrich-Heine-Universität Düsseldorf, Universitätsstraße 1, D-40225 Düsseldorf, Germany*⁶*Department of Physics, Oakland University, Rochester, Michigan 48309-4487, USA*

(Received 7 October 2009; published 15 January 2010)

We study the nonlinear driven response and sliding friction behavior of the phase-field-crystal (PFC) model with pinning including both thermal fluctuations and inertial effects. The model provides a continuous description of adsorbed layers on a substrate under the action of an external driving force at finite temperatures, allowing for both elastic and plastic deformations. We derive general stochastic dynamical equations for the particle and momentum densities including both thermal fluctuations and inertial effects. The resulting coupled equations for the PFC model are studied numerically. At sufficiently low temperatures, we find that the velocity response of an initially pinned commensurate layer shows hysteresis with dynamical melting and freezing transitions for increasing and decreasing applied forces at different critical values. The main features of the nonlinear response in the PFC model are similar to the results obtained previously with molecular dynamics simulations of particle models for adsorbed layers.

DOI: [10.1103/PhysRevE.81.011121](https://doi.org/10.1103/PhysRevE.81.011121)

PACS number(s): 64.60.Cn, 68.43.De, 64.70.Rh, 05.40.-a

I. INTRODUCTION

In recent years, considerable attention has been given to the study of driven adsorbed layers in relation to sliding friction phenomena between surfaces at the microscopic level [1–6]. The nonlinear response of the adsorbed layer is a central problem for understanding experiments on sliding friction between two surfaces with a lubricant [4] or between adsorbed layers and an oscillating substrate [7,8]. Various elastic and particle models have been used to study the driven dynamical transitions and the sliding friction of adsorbed monolayers [1–3,5]. A fundamental issue in modeling such systems is the origin of the hysteresis and the dynamical melting and freezing transitions associated with the different static and kinetic frictional forces when increasing the driving force from zero and decreasing from a large value, respectively. In driven lattice systems, hysteresis can occur in the underdamped regime where inertial effects are present or in the presence of topological defects such as dislocations and thermal fluctuations [9]. Topological defects can be automatically included in a full microscopic model involving interacting atoms in the presence of a substrate potential using realistic interaction potentials. However, numerical observation of the full complexities of the phenomena is severely limited by the small system sizes that can be studied, even when simple Lennard-Jones potentials are employed [3].

Recently, a phase-field-crystal (PFC) model was introduced [10–12] that allows for both elastic and plastic deformations within a continuous description of the particle density while still retaining information on atomic length scales. By extending the PFC model to take into account the effect of an external pinning potential [13], a two-dimensional ver-

sion of the model has been used to describe commensurate-incommensurate transitions in the presence of thermal fluctuations [14] and the driven response of pinned lattice systems without thermal fluctuations and inertial effects [15]. However, in order to study fully the sliding friction behavior, *both* inertial effects *and* thermal fluctuations need to be taken into account.

In this work, we study sliding friction of an adsorbed layer via the nonlinear response of the PFC model to an external force in the presence of a pinning potential. To this end, we first derive the general stochastic dynamical equations for the particle and momentum density fields taking full account of the thermal fluctuations and inertial effects. The resulting coupled equations are studied numerically. At low temperatures, we find that the velocity response of an initially commensurate layer shows hysteresis with dynamical melting and freezing transitions for increasing and decreasing applied forces at different critical values. The main features of the nonlinear response are similar to the results obtained previously with molecular dynamics simulations of particle models. However, the dynamical melting and freezing mechanisms are significantly different. In the PFC model, nucleation occurs via stripes rather than closed domains found in the particles model.

II. DYNAMICS OF THE PFC MODEL WITH INERTIAL EFFECTS

In the generalized PFC model, the system is represented by a coarse grained effective Hamiltonian that is a functional of the number density field. To take into account inertial effects in the dynamics, we need to consider the contribution of the kinetic energy to the total energy of the system in

addition to the configurational energy. Thus we consider the momentum density, $\vec{g}(\vec{x}) = \rho(\vec{x})\vec{v}(\vec{x})$, as a dynamical variable in the coarse grained Hamiltonian in addition to the particle density field $\rho(\vec{x})$. The total effective Hamiltonian in the presence of an external force \vec{f} can be written as

$$H_t = H_{\text{kin}} + H_{\text{int}} - \int d\vec{x} \rho(\vec{x}) \vec{x} \cdot \vec{f}, \quad (1)$$

where H_{kin} is the kinetic energy contribution given by

$$H_{\text{kin}} = \int d\vec{x} \frac{\vec{g}^2(\vec{x})}{2\rho(\vec{x})}, \quad (2)$$

and $H_{\text{int}}(\rho)$ is the configurational contribution to the effective Hamiltonian in the original PFC model. The last term is due to the presence of the external force \vec{f} .

In the absence of energy dissipation, the time dependence of ρ and \vec{g} are determined by the Poisson brackets $\{H_t, \rho\}$ and $\{H_t, \vec{g}\}$. At finite temperatures, additional dissipative noise terms are present in the dynamical equations. The noise satisfies the fluctuation dissipation relations [16,17] which allows the system to reach thermal equilibrium in the absence of external perturbations. We include the dissipative noise term directly in the dynamical equations for \vec{g} , which is a nonconserved field [18,19].

For the particle density $\rho(\vec{x}, t)$, we have

$$\frac{\partial \rho}{\partial t} = - \sum_j \int d\vec{x}' \{ \rho(\vec{x}), g_j(\vec{x}') \} \frac{\delta H_t}{\delta g_j(\vec{x}')}, \quad (3)$$

and for the momentum density $\vec{g}(x, t)$,

$$\begin{aligned} \frac{\partial g_i}{\partial t} = & - \int d\vec{x}' \{ g_i(\vec{x}), \rho(\vec{x}') \} \frac{\delta H_t}{\delta \rho(\vec{x}')} \\ & - \sum_j \int d\vec{x}' \{ g_i(\vec{x}), g_j(\vec{x}') \} \frac{\delta H_t}{\delta g_j(\vec{x}')} - \eta \frac{\delta H_t}{\delta g_i} + v_i(\vec{x}, t), \end{aligned} \quad (4)$$

where η is a dissipative coefficient and the noise $\vec{v}(\vec{x}, t)$ has variance

$$\langle v_i(\vec{x}, t) v_j(\vec{x}', t') \rangle = 2k_B T \eta \delta(\vec{x} - \vec{x}') \delta(t - t') \delta_{i,j}. \quad (5)$$

The Poisson brackets for the mass and momentum densities are given by [16,17]

$$\{ \rho(\vec{x}), g_i(\vec{x}') \} = \nabla_i [\rho(\vec{x}) \delta(\vec{x} - \vec{x}')];$$

$$\{ g_i(\vec{x}), \rho(\vec{x}') \} = \rho(\vec{x}) \nabla_i \delta(\vec{x} - \vec{x}');$$

$$\{ g_i(\vec{x}), g_j(\vec{x}') \} = \nabla_j [g_i(\vec{x}) \delta(\vec{x} - \vec{x}')] - \nabla_i' [g_j(\vec{x}') \delta(\vec{x} - \vec{x}')]. \quad (6)$$

Substituting Eqs. (6) into Eqs. (3) and (4) gives

$$\frac{\partial \rho}{\partial t} = - \vec{\nabla} \cdot \vec{g}; \quad (7)$$

$$\frac{\partial g_i}{\partial t} = - \rho \nabla_i \frac{\delta H_{\text{int}}}{\delta \rho} - \eta \frac{g_i}{\rho} + \rho f_i + v_i(\vec{x}, t) - \sum_j \nabla_j \frac{g_i g_j}{\rho}, \quad (8)$$

for a spatially uniform external force (f_i). We can redefine the coefficient $\eta \rightarrow \rho \eta$ to remove the denominator from the term g_i/ρ in Eq. (8). With this change the variance of the noise $\vec{v}(x, t)$ becomes

$$\langle v_i(\vec{x}, t) v_j(\vec{x}', t') \rangle = 2k_B T \eta \rho(\vec{x}) \delta(\vec{x} - \vec{x}') \delta(t - t') \delta_{i,j} \quad (9)$$

To leading order in the momentum density \vec{g} , we drop the quadratic term in Eq. (8) giving

$$\frac{\partial \rho}{\partial t} = - \vec{\nabla} \cdot \vec{g}; \quad (10)$$

$$\frac{\partial g_i}{\partial t} = - \rho \nabla_i \frac{\delta H_{\text{int}}}{\delta \rho} + \rho f_i - \eta g_i + v_i(\vec{x}, t). \quad (11)$$

Similar dynamical equations for PFC models with internal dissipation were obtained in Ref. [20]. If the effective Hamiltonian H_{int} is known, then these coupled stochastic dynamical equations should provide a full description of the particle and momentum densities in presence of fluctuations represented by the noise $v_i(x, t)$ with correlations proportional to the temperature T and inertial effects determined by the damping parameter η . In the overdamped limit, $\partial g/\partial t = 0$, with $T=0$ and $f=0$, the equation for the time evolution of ρ obtained by inserting \vec{g} from Eq. (11) in Eq. (10) reduces to the deterministic equation for the density which has been obtained from classical density functional theory of liquids [21].

III. PFC MODEL WITH PINNING AND THERMAL FLUCTUATIONS

In the presence of an external pinning potential [13–15], a specific form of the configurational energy contribution H_{int} to the total effective Hamiltonian in Eq. (1) has been proposed which is an extension of the standard PFC model free energy functional used in many applications [11,12]. In dimensionless form, this effective interaction Hamiltonian $H_{\text{int}} = H_{\text{pfc}}$ can be written as

$$H_{\text{pfc}} = \int d\vec{x} \left\{ \frac{1}{2} \psi [r + (1 + \nabla^2)^2] \psi + \frac{\psi^4}{4} + V\psi \right\}, \quad (12)$$

where $\psi(\vec{x})$ is a continuous field, $V(\vec{x})$ represents the external pinning potential and r is a parameter. The phase-field $\psi(\vec{x})$ can be regarded as a measure of deviations of the particle number density $\rho(\vec{x})$ from a uniform reference value ρ_0 , such that $\psi(\vec{x}) = (\rho(\vec{x}) - \rho_0) / \rho_0$. It is a conserved field and its average value, $\bar{\psi}$, represents another parameter in the model. The intrinsic wave vector of the model \vec{k}_i has no preferred directions and its magnitude is set to unity in the present work.

In the absence of a pinning potential, the Hamiltonian of Eq. (12) is minimized by a configuration of the field $\psi(\vec{x})$ forming a hexagonal pattern of peaks with reciprocal lattice vectors of magnitude $|\vec{k}_h| \approx 1$, in an appropriate range of values for the parameters r and $\bar{\psi}$ in the model. This periodic

structures of peaks in ψ can be regarded as a simple model of an atomic layer.

To study the nonlinear dynamical behavior, we take the form of H_{int} given by Eq. (12) together with the kinetic energy and the external force terms for the total effective Hamiltonian H_t in the dynamical equations Eq. (11) and in Eq. (9). We make the additional simplifying approximation that $\rho(\vec{x}) \approx \rho_0$ in Eq. (9) and in the coefficient of the first term in Eq. (11). This approximation ensures that the effective diffusion coefficient in the model is positive definite for any temperature and driving force. Another motivation for this approximation is to show that the dynamical equations used in the previous works [13,15] follows from the more general Eqs. (10) and (11). Setting $\rho_0=1$, we obtain,

$$\begin{aligned} \frac{\partial \psi}{\partial t} &= -\vec{\nabla} \cdot \vec{g}; \\ \frac{\partial g_i}{\partial t} &= -\nabla_i \frac{\delta H_{\text{pfc}}}{\delta \psi} + \psi f_i - \eta g_i + v_i(\vec{x}, t); \\ \langle v_i(\vec{x}, t) v_j(\vec{x}', t') \rangle &= 2k_B T \eta \delta(\vec{x} - \vec{x}') \delta(t - t') \delta_{i,j}. \end{aligned} \quad (13)$$

Here, we have redefined $\vec{g} \rightarrow \vec{g} + \rho_0 \vec{f} / \eta$ to remove a uniform term on right hand side of the equation for \vec{g} .

The above coupled equations can be combined in a single equation by applying the operator $\vec{\nabla} \cdot$ to both sides of the second equation and using the first one to eliminate $\vec{\nabla} \cdot \vec{g}$, giving

$$\begin{aligned} \frac{\partial^2 \psi}{\partial t^2} + \eta \frac{\partial \psi}{\partial t} &= \nabla^2 \frac{\delta H_{\text{pfc}}}{\delta \psi} - \vec{f} \cdot \vec{\nabla} \psi + \xi(\vec{x}, t); \\ \langle \xi(\vec{x}, t) \xi(\vec{x}', t') \rangle &= 2k_B T \eta \nabla^2 \delta(\vec{x} - \vec{x}') \delta(t - t'). \end{aligned} \quad (14)$$

When the driving force \vec{f} and the external pinning potential are set to zero, the dynamical equation above is identical to the one used in Ref. [22], to study propagating density modes in the PFC model. It can also be obtained by introducing inertial effects in the dynamical equation of the PFC model through a memory function of exponential form [23]. In the limit of large η when $\partial g_i / \partial t$ in Eqs. (13) or, equivalently, $\partial^2 \psi / \partial t^2$ in Eqs. (14), can be neglected, these equations reduce to the familiar overdamped dynamical equations used in the previous works [13,15] without inertial effects at zero temperature.

IV. NUMERICAL RESULTS AND DISCUSSION

In this section, we present our numerical results for the velocity response of the PFC model in presence of an external pinning potential under a uniform applied force. For the numerical calculations, the phase-field $\psi(\vec{x})$ and momentum density field $\vec{g}(\vec{x})$ are defined on a space square grid with $dx=dy=\pi/4$ with periodic boundary conditions. System sizes $L \times L$ with $L=64$ to 128 were used. The Laplacians and gradients were evaluated using finite differences.

We consider a pinning potential $V(\vec{x})$ representing a substrate with square symmetry

$$V(\vec{x}) = -V_0 [\cos(k_0 x) + \cos(k_0 y)], \quad (15)$$

where k_0 defines the period of the pinning potential for both the x and y directions. The lattice misfit between the phase-field crystal and the pinning potential can be defined as $\delta_m = (1 - k_0)$. We choose the parameters of the PFC model as $r = -0.25$, $\bar{\psi} = -0.25$, a lattice mismatch $\delta = -0.5$ and a pinning strength $V_0 = 0.15$. For these parameters, the ground-state configuration in the absence of an external driving force is a $c(2 \times 2)$ phase [14,15], where every second site of the lattice of the pinning potential corresponds to a peak in the phase-field $\psi(\vec{r})$. This commensurate configuration is stable below a commensurate melting temperature $T_c \approx 0.055$. This is determined from the temperature dependence of the structure factor as well as that of the specific heat. The structure-factor $S(\vec{k})$ is calculated from the positions \vec{R}_j of the peaks in the phase field as

$$S(\vec{k}) = \left\langle \sum_{j,j'=1}^{N_p} \frac{1}{N_p} e^{-i\vec{k} \cdot (\vec{R}_j - \vec{R}_{j'})} \right\rangle. \quad (16)$$

Here, $\langle \dots \rangle$ denotes a time average which is equivalent to a thermal average at equilibrium. For increasing temperatures thermal fluctuations disorder the layer and the scaled structure-factor $S(\vec{k}_c) / N_p$ evaluated at the primary reciprocal lattice vector \vec{k}_c of the commensurate phase decreases from a value of unity at $T=0$ rapidly through T_c to zero at higher temperatures. The transition is broadened due to finite size effects as shown in Fig. 1(a). Another signature of this commensurate melting transition is that the specific heat develops a broad peak near T_c corresponding to an increase in the fluctuations in ψ at the transition as shown in Fig. 1(b). Finally, the mobility μ defined as $\lim_{f \rightarrow 0} (v/f)$ where v is the drift velocity, also changes qualitatively through the transition. In the commensurate phase, a finite threshold for the sliding of the overlayer exists and hence the mobility is vanishingly small. As the system melts above T_c the mobility rapidly rises and reaches a plateau at higher temperatures. This behavior is shown in Fig. 1(c). For the study of the nonlinear response and sliding friction of the system, we focus on an initial state which corresponds to a well pinned $c(2 \times 2)$ phase initially, corresponding to $T=0.01 \ll T_c$, and a damping parameter $\eta=0.4$.

In our numerical calculations, a driving force along the x direction is increased from zero to a maximum value above a critical depinning force and then decreased back to zero. For each value of the force, the coupled Eqs. (13) are solved using an Euler algorithm with time step $dt=0.001-0.005$. The implicit trapezoidal method was also used to check numerical stability. For each value of the force, 10^6 time steps were used to allow the system to reach a velocity steady state and an additional period with the same number of time steps were used to calculate the average velocity and other time averaged quantities.

To study the velocity response of the PFC model, we need to determine the velocity of the peaks [14] in the phase-field $\psi(\vec{x})$. This is done by determining the time dependence of the

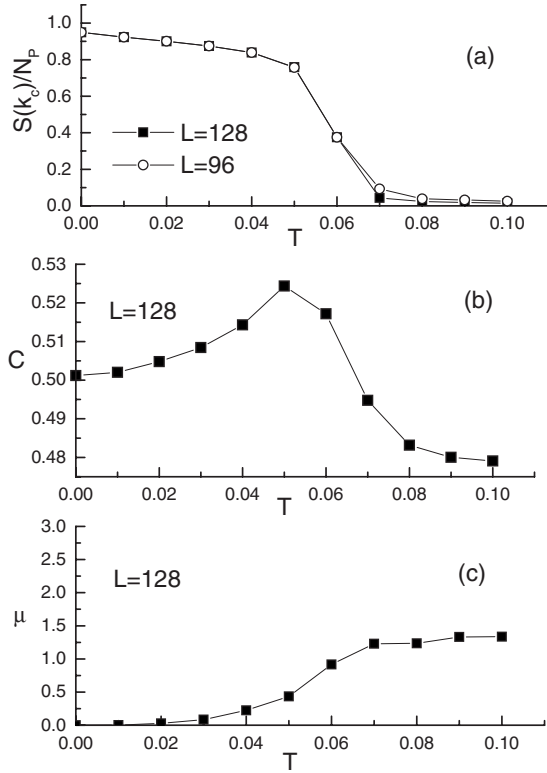


FIG. 1. Temperature dependence of the (a) scaled structure-factor peak $S(k_c)/N_p$; (b) specific heat C , and mobility μ for the model without an external driving force.

peak positions $[\vec{R}_i(t)]$ in ψ . The steady state drift velocity \vec{v} for the system is obtained from the peak velocities \vec{v}_i ($d\vec{R}_i/dt$) as

$$\vec{v} = \left\langle \frac{1}{N_p} \sum_{i=1}^{N_p} \vec{v}_i(t) \right\rangle, \quad (17)$$

where N_p is the number of peaks and $\langle \dots \rangle$ denotes time average. The steady state structure-factor $S(\vec{k})$ which is a measure of translational order, is also calculated from the peak positions \vec{R}_j , as in Eq. (16).

The most notable qualitative feature of the velocity response to the driving force \vec{f} (as shown in Fig. 2) is that it

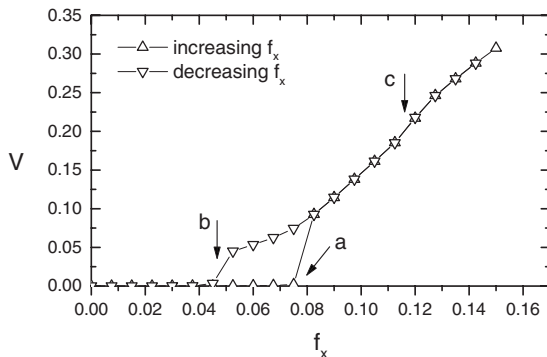


FIG. 2. Velocity response as a function of applied force. Arrows correspond to critical values f_a , f_b , and f_c .

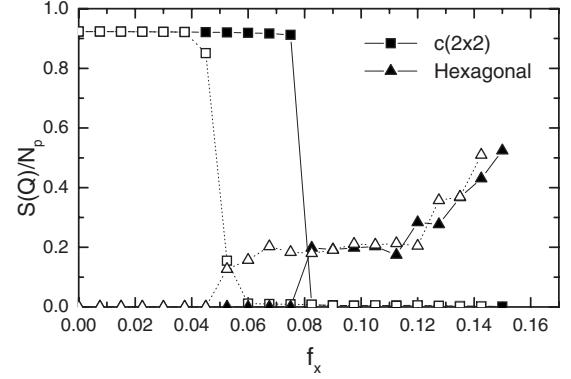


FIG. 3. Scaled structure-factor peak $S(Q)/N_p$ as a function of applied force. Here, \vec{Q} stands for the primary reciprocal lattice vector for either the $c(2 \times 2)$ phase (\vec{k}_c) or the hexagonal phase (\vec{k}_h). Filled and open symbols correspond to increasing and decreasing forces, respectively.

shows hysteresis behavior with two different critical force thresholds $f_a \approx 0.075$ for increasing forces and $f_b \approx 0.045$ for decreasing forces. These two threshold values correspond to the static frictional force and kinetic frictional force, respectively. As the force is increased beyond f_a , the velocity jumps abruptly from zero to a finite value whereas when the force is decreased below f_b the velocity of the sliding layer drops abruptly and become pinned by the external potential to form an immobile commensurate state again. Below, we present the microscopic details of the configurations for the system in the neighborhood of the two thresholds. This allows us to characterize the change in velocity response at f_a as a dynamical force induced melting transition of the initial commensurate state, and the second transition at f_b as a dynamical force induced freezing of the sliding phase.

To study these transitions, we first examine the behavior of the steady state structure factor, as shown in Fig. 3. We focus on the dependence of $S(Q)$ on the driving force, where \vec{Q} is the dominant reciprocal lattice vector of the layer. $\vec{Q} = \vec{k}_c$ corresponds to the primary reciprocal lattice vector for the $c(2 \times 2)$ phase and $\vec{Q} = \vec{k}_h$ to the reciprocal lattice vector of the hexagonal phase in absence of the driving force. Consistent with the velocity response behavior in Fig. 2, on increasing the force beyond f_a , $S(k_c)$ drops abruptly to zero. This is the onset of the dynamical force induced melting transition of the initial $c(2 \times 2)$ commensurate state. The behavior of $S(k_c)$ is analogous to the temperature induced disordering transition shown in Fig. 1(a). On decreasing the force, the value of $S(k_c)$ stays vanishingly small until the force drops below the threshold f_b , at which point $S(k_c)$ rapidly increases to a value corresponding to the commensurate pinned state. The other interesting feature is that for $f > f_c \approx 0.12$, the structure factor shows clear sixfold coordinated peaks at the reciprocal lattice vectors $\vec{Q} = \vec{k}_h$ corresponding to a hexagonal phase, which grows as the driving force increases. This implies that at a driving force larger than this third threshold f_c , there is another dynamic continuous transition from a disordered phase into an incommensurate hexagonal phase. This state emerges as the average effect of the external pinning potential becomes less and less important at

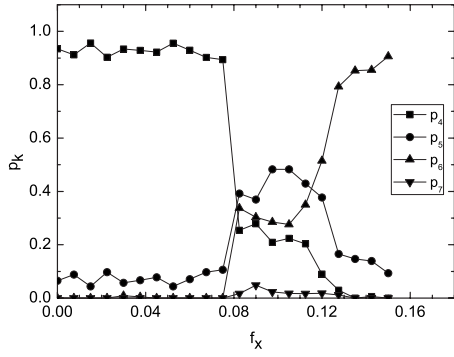


FIG. 4. Fraction of density peaks p_k with coordination number k (4,5,6, and 7 nearest neighbors) for increasing applied force.

high sliding velocities and the steady state then approximately corresponds to the phase-field crystal in the absence of the pinning potential which has hexagonal symmetry in the equilibrium state. However, since the scaled structure factor for the hexagonal phase is still much less than unity, this incommensurate hexagonal phase is not fully ordered even at the largest force values ($f < 0.15$) studied so far.

To better understand the dynamic melting transition at f_a and the freezing transition at f_b , we inspect the steady state configurations near the two thresholds as well as the region between the two thresholds in real space, which yield more direct and detailed information than the structure factor at the peak values. Treating the peaks in the phase field as “particles,” the coordination number of each particle in the commensurate $c(2 \times 2)$ phase is 4 while for the incommensurate hexagonal phase it is 6. Furthermore, the core of dislocations in a hexagonal lattice correspond to particles with fivefold and sevenfold coordination numbers. Thus, further insight into the microscopic nature of the steady state configurations can be obtained by inspecting the fraction of particles with coordination numbers p_4, p_5, p_6, p_7 . The results are shown in Figs. 4 and 5 for increasing and decreasing applied forces, respectively. Figure 4 shows that when the force f is increased beyond f_a , besides the rapid drop in p_4 consistent with the structure-factor data, the fraction of other coordination numbers p_5, p_6, p_7 also increases significantly until f

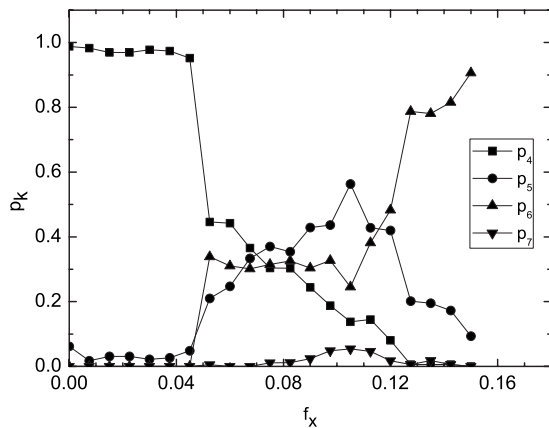


FIG. 5. Fraction of density peaks p_k with coordination number k for decreasing applied force.

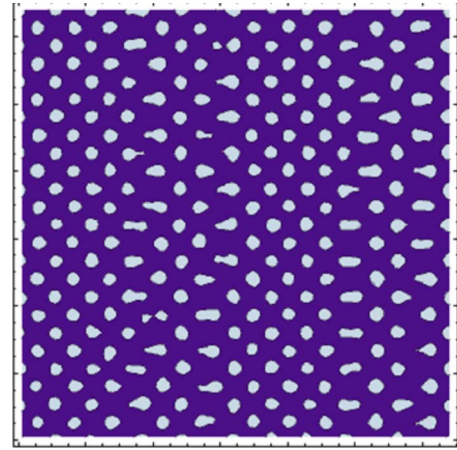


FIG. 6. (Color online) Snapshot of the density field in the sliding state at $f_x=0.0525$.

reaches f_c , beyond which p_5 and p_7 start to decrease and we have a continuous transition to an incommensurate hexagonal phase. Thus the nature of steady state above f_a is a strongly disordered state analogous to the high temperature phase in the absence of driving force above the commensurate melting temperature. On decreasing the force below f_a , the data in Fig. 5 shows that the system remains in a melted state with large disorder until the threshold f_b is reached, below which we have only fourfold coordination number and the system returns to a pinned $c(2 \times 2)$ phase. Taken together, the qualitative behavior of the structure factor and the coordination number strongly suggest that the transitions at f_a and f_b can be regarded as a force induced dynamical melting and freezing transition, respectively.

Finally, we look at a snapshot of the phase-field $\psi(x)$ obtained in the steady state for a driving force just above the dynamical freezing threshold f_b . This is shown in Fig. 6. It consists of stripes of commensurate $c(2 \times 2)$ phase separated by disordered domain walls. These domain walls are mobile liquidlike regions as confirmed by a count of the fraction of various coordination numbers as shown in Fig. 7. The commensurate stripes have only fourfold coordination numbers,

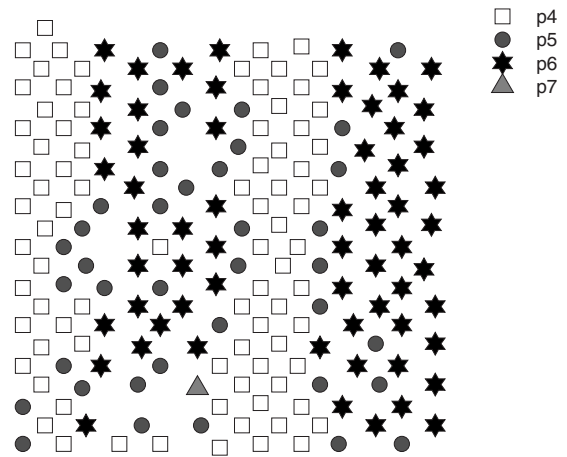


FIG. 7. Configuration of the density peak locations with corresponding coordination numbers for the density plot in Fig. 6.

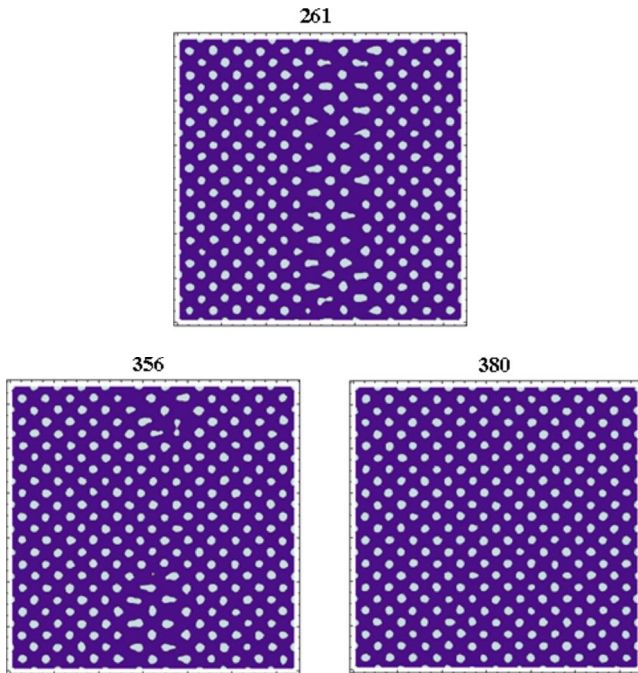


FIG. 8. (Color online) Snapshots of the density field for increasing times after starting from the moving state of Fig. 6 and reaching the pinned commensurate state, at a force $f_x=0.045$ just below f_b . Times are in units of 10^3 time steps.

while in the liquidlike domain walls, there is a mixture of fivefold, sixfold and sevenfold coordination numbers. Starting from this steady state which still has a nonzero average sliding velocity, we can watch the dynamical freezing in real time as the driving force is reduced to a value just below the freezing threshold f_b . The time sequence of the freezing is shown in Fig. 8. In returning to the pinned state, the domain wall regions gradually shrink and eventually disappear.

The main features of the dynamical melting and freezing and hysteresis effects in PFC model described above are similar to those found earlier by molecular dynamics simulations of particle models with interacting Lennard-Jones potentials [3] and the uniaxial Frenkel-Kontorova model [5] under a driving force starting from a commensurate state. The similarity of results from these very different models demonstrates the universality of the hysteresis loop for models with inertia effects and the macroscopic consequence of stick and slip motion. When compared with the Lennard-Jones particle model one notable difference is the mechanism of the dynamical freezing at f_b . In the present PFC model, it involves parallel liquidlike domain walls similar to the uniaxial Frenkel-Kontorova model, although in the absence of the driving force there is no easy direction. In the Lennard-Jones model, nucleation and growth occur via

closed pinned domains [3]. The origin of this intriguing difference requires further investigation of both atomistic and PFC models. One possibility is that the nucleation of stripes is related to the absence of a fixed constraint on the number of peaks in the PFC model. In this case, the mechanism of the dynamical freezing found in the present PFC model should be compared to the results of particle models with a constant chemical potential rather than with a fixed particle number. Unfortunately, such results are currently unavailable.

V. CONCLUSIONS

In this paper, we have derived general stochastic dynamical equations for the particle and momentum density fields including both thermal fluctuations and inertial effects. The new equations are applied to the study of the nonlinear response to an external driving force for a PFC model with a pinning potential. The model describes a driven adsorbed layer as a continuous density field, allowing for elastic and plastic deformations. The numerical results showed that at low temperatures, the velocity response of an initially commensurate layer shows hysteresis with dynamical melting and freezing transitions for increasing and decreasing applied forces at different critical values. The inclusion of both thermal fluctuations and inertial effects are crucial for a correct description of these dynamical transitions. The main features of the nonlinear response, in particular the hysteresis loop separating the static friction and sliding friction thresholds are similar to the results obtained previously with particle models. However, the details of the dynamical melting and freezing mechanisms are significantly different. In the PFC model considered here, they correspond to nucleation of stripes rather than closed domains found in particle models. It is possible to describe more realistic sliding adsorbed systems if the parameters of the model are adjusted to match experimental systems, similar to the recent works for the colloidal systems [21] and Fe [24].

ACKNOWLEDGMENTS

J.A.P.R. acknowledges the support from Secretaria da Administração do Estado da Bahia. E.G. was supported by Fundação de Amparo à Pesquisa do Estado de São Paulo-FAPESP (Grant No. 07/08492-9). S.C.Y. also acknowledges FAPESP (Grant No. 09/01942-4) for supporting a visit to Instituto Nacional de Pesquisas Espaciais. This work has been supported in part also by the Academy of Finland through its COMP Center of Excellence grant and by joint funding under EU STREP under Grant No. 016447 MagDot and NSF DMR under Award No. 0502737. K.R.E. acknowledges support from NSF under Grant No. DMR-0906676. E.G. thanks Sami Majaniemi for many helpful discussions.

- [1] B. N. J. Persson, *Sliding Friction: Physical Principles and Applications* (Springer, Heidelberg, 1998).
- [2] *Physics of Sliding Friction*, edited by B. N. J. Persson and E. Tosatti (Kluwer, Dordrecht, 1996).
- [3] B. N. J. Persson, Phys. Rev. Lett. **71**, 1212 (1993); J. Chem. Phys. **103**, 3849 (1995).
- [4] H. Yoshizawa, P. McGuiggan, and J. Israelachvili, Science **259**, 1305 (1993); J. Israelachvili, Surf. Sci. Reports **14**, 109 (1992); M. Urbakh, J. Klafter, G. Dourdon, and J. Israelachvili, Nature (London) **430**, 525 (2004).
- [5] E. Granato and S. C. Ying, Phys. Rev. B **59**, 5154 (1999).
- [6] E. Granato and S. C. Ying, Phys. Rev. Lett. **85**, 5368 (2000); Phys. Rev. B **69**, 125403 (2004).
- [7] J. Krim, D. H. Solina, and R. Chiarello, Phys. Rev. Lett. **66**, 181 (1991).
- [8] A. Carlin, L. Bruschi, M. Ferrari, and G. Mistura, Phys. Rev. B **68**, 045420 (2003).
- [9] D. S. Fisher, Phys. Rev. B **31**, 1396 (1985).
- [10] K. R. Elder, M. Katakowski, M. Haataja, and M. Grant, Phys. Rev. Lett. **88**, 245701 (2002).
- [11] K. R. Elder and M. Grant, Phys. Rev. E **70**, 051605 (2004).
- [12] K. R. Elder, N. Provatas, J. Berry, P. Stefanovic, and M. Grant, Phys. Rev. B **75**, 064107 (2007).
- [13] C. V. Achim, M. Karttunen, K. R. Elder, E. Granato, T. Ala-Nissila, and S. C. Ying, Phys. Rev. E **74**, 021104 (2006); J. Phys.: Conf. Ser. **100**, 072001 (2008).
- [14] J. A. P. Ramos, E. Granato, C. V. Achim, S. C. Ying, K. R. Elder, and T. Ala-Nissila, Phys. Rev. E **78**, 031109 (2008).
- [15] C. V. Achim, J. A. P. Ramos, M. Karttunen, K. R. Elder, E. Granato, T. Ala-Nissila, and S. C. Ying, Phys. Rev. E **79**, 011606 (2009).
- [16] P. M. Chaikin and T. C. Lubensky, *Principles of Condensed Matter Physics* (Cambridge University Press, Cambridge, England, 1995).
- [17] G. Mazenko, *Nonequilibrium Statistical Mechanics* (Wiley-VCH, New York, 2006).
- [18] S. Ramaswamy and G. F. Mazenko, Phys. Rev. A **26**, 1735 (1982).
- [19] B. N. J. Persson and E. Tosatti, Phys. Rev. B **50**, 5590 (1994).
- [20] S. Majaniemi and M. Grant, Phys. Rev. B **75**, 054301 (2007).
- [21] S. van Teeffelen, R. Backofen, A. Voigt, and H. Löwen, Phys. Rev. E **79**, 051404 (2009).
- [22] P. Stefanovic, M. Haataja, and N. Provatas, Phys. Rev. Lett. **96**, 225504 (2006).
- [23] P. Galenko, D. Danilov, and V. Lebedev, Phys. Rev. E **79**, 051110 (2009).
- [24] A. Jaatinen, C. V. Achim, K. R. Elder, and T. Ala-Nissila, Phys. Rev. E **80**, 031602 (2009).